



**RIPPA**

# R90

Standard bucket capacity: 0.33m<sup>3</sup> | Rated power: 45kW/2100rpm |  
Operating weight: 8200kg



# RIPPA

## Keep evolving for the better

---

Rippa Machinery Group Co., Ltd. was established in 2006 and has passed the EU CEISO9001 certification. It has been awarded the title of "Contract abiding and Reputable" in Shandong Province. The company has a domestic sales department and an international business unit, and the enterprise is developing towards diversification, multi industry, and collectivization

## We are Rippa

---

Rippa is a brand renewal and upgrade, reflecting our core concept of sustainable development and leaving a positive development footprint. Looking ahead, we will continue to provide innovative products and solutions to drive continuous progress in our world today.



# NEW POWER

Equipped with YANMAR 4TNV98L engines, providing more power support for driving. With a gentle roar, elegant start, strong and stable output power, it has been proven by the market .



## REDUCE FUEL CONSUMPTION



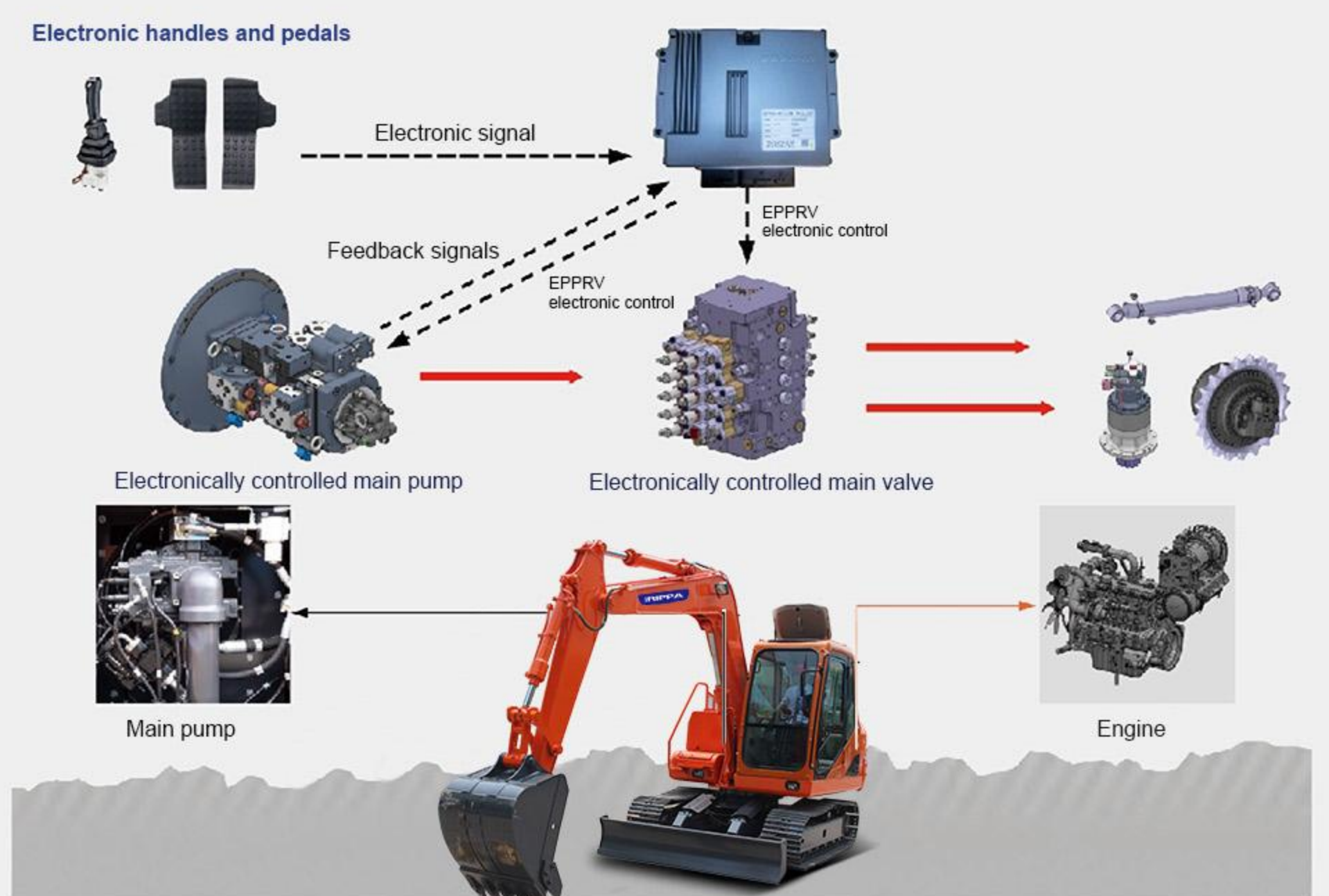
### Fully electronic hydraulic system

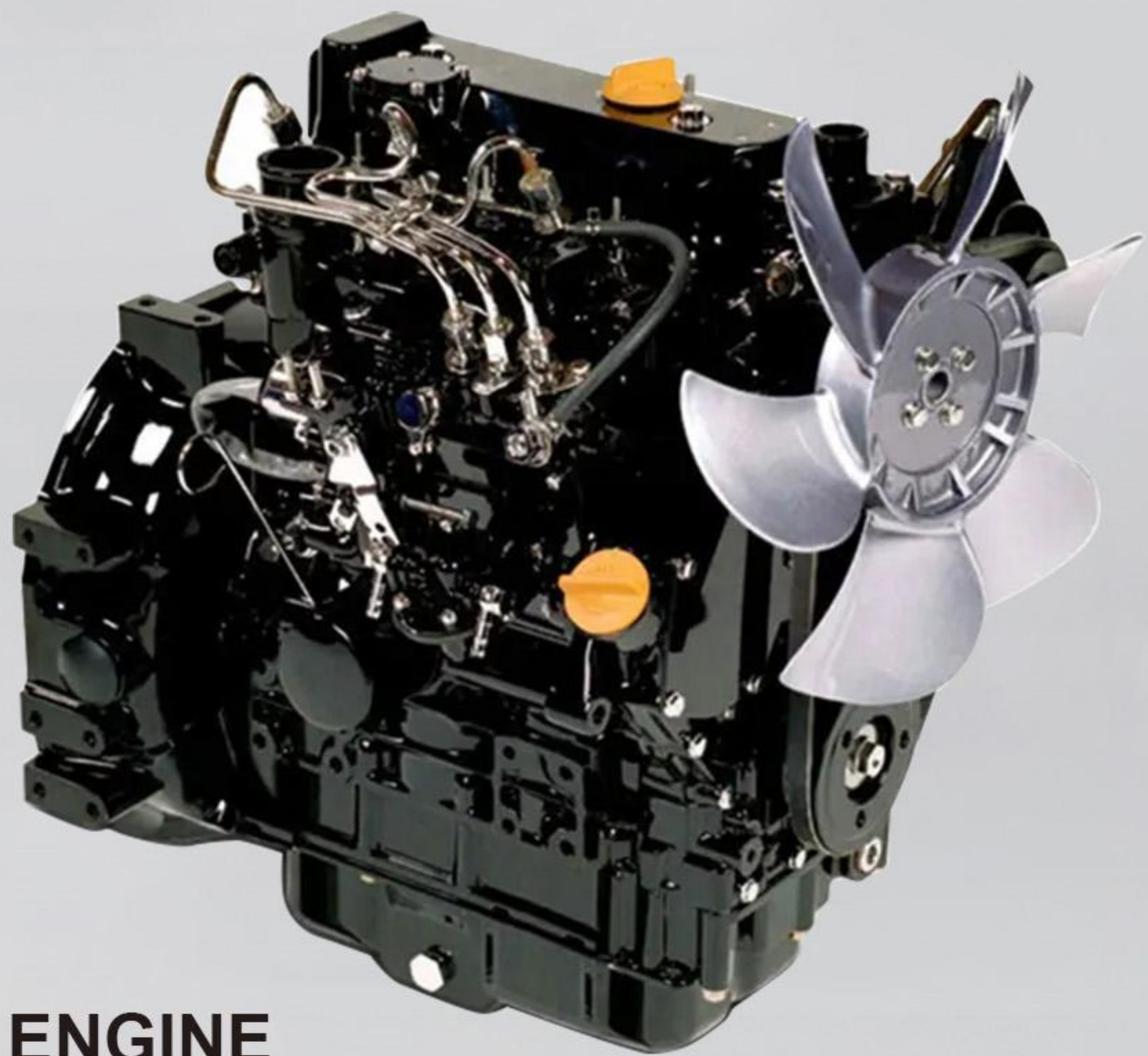
By electronically controlling the main pump and valve, precise control of hydraulic output is achieved, reducing system energy consumption losses and significantly reducing excavator fuel consumption.

### Upgrading the system

The fully upgraded system adjusts the engine speed and main pump output torque in real time according to the intensity of the working conditions, making energy consumption control more precise and the fuel saving effect more obvious.

The above data are all obtained under ideal testing conditions, and there may be some deviations from the actual testing data for reference only.





## ENGINE

|              |               |
|--------------|---------------|
| Manufacturer | Yanmar 4TNV98 |
| Power        | 45kW/2100 rpm |



### - Economically fuel-efficient, with enhanced power

- Adopting electronically controlled hydraulic system, reducing fuel consumption by 7% and pursuing efficient fuel economy
- Hydraulic main pump main valve fully electric signal control, fast action speed, improved efficiency, and maximized customer revenue
- Equipped with a Yanmar 4tnv98l engine, it has strong power and is efficient and fuel-efficient.

### - Large and small arm strengthening

- The high-efficiency engine combined with the large-capacity bucket and mine-type reinforced chassis comprehensively improves production capacity.
- Structural stability and durability of the large and small arms , and it can better adapt to harsh working condition ve the wThe integrated design of the large arm bottom plate reduces the welding points of the large and small arms , anstructure to avoid stress concentration
- At the same time , the plate thickness of key parts is reinforced to impro

### - High quality and durable

- The whole machine adopts original imported engine, main pump, main control valve travel and rotary motor, with reliable performance.
- Structural parts have been proven by the global market, can meet all-round competent working conditions, and are durable.

### - Comfortable cab

The design concept of "driver centered" greatly reduces the noise and vibration inside the cab; At the same time, it has an air conditioning system to meet the needs of operations in the four seasons, improving the comfort and convenience of operations



## POWER SYSTEM

It uses Yanmar 4tnv98l engines, which have high power and high performance of core components, and continue to maintain the performance advantages of the previous generation products; the engine cylinder combustion temperature is high, the fuel efficiency is significantly improved, and the power is strong; the exhaust emissions are environmentally friendly.



## CENTRALIZED SWITCH

Centralized switch design greatly improves equipment operation convenience and driver work efficiency.



## REINFORCED CYLINDER

The hydraulic oil cylinder with strengthened design and integrated design can reduce welding seams and prevent the oil cylinder from breaking easily.

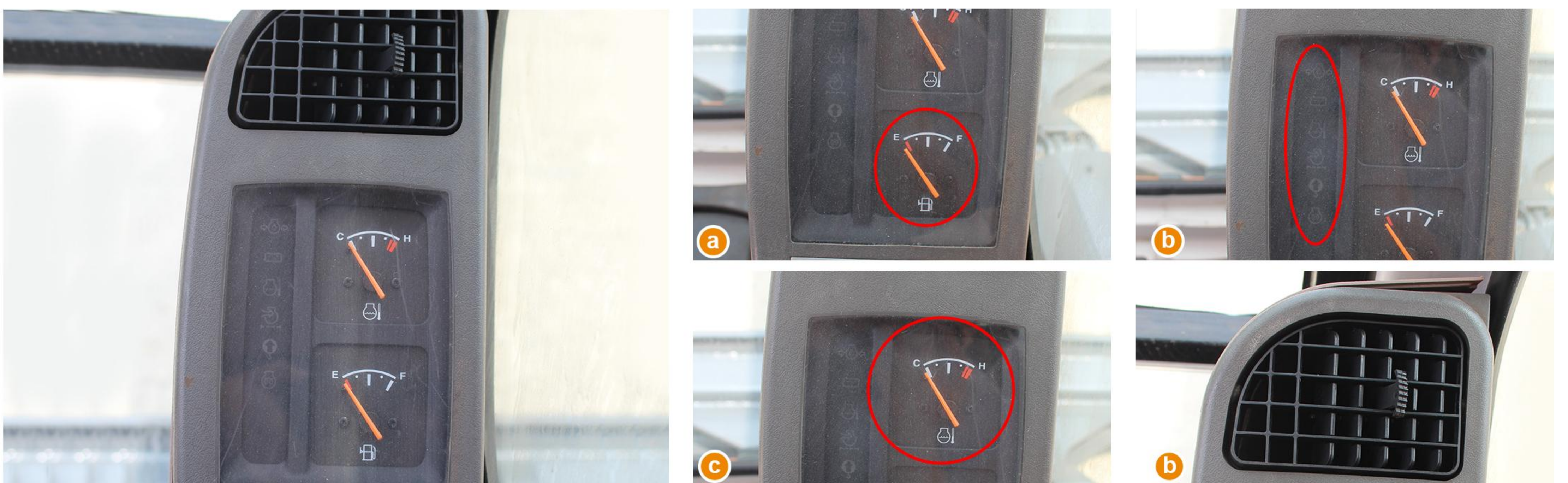


## NEW STRUCTURAL DESIGN OF CHASSIS

The hydraulic oil cylinder with strengthened design and integrated design can reduce welding seams and prevent the oil cylinder from breaking easily.



Ergonomic shock-absorbing seat



## Multifunctional display table

- a.** Fuel consumption management: Changes in fuel volume can be confirmed on the instrument panel so that fuel can be refilled in time to avoid work being affected by lack of fuel.
- b.** Warning information confirmation: Equipment warning information can be confirmed on the dashboard.
- c.** Hydraulic oil management: You can confirm the changes in the hydraulic oil in the dashboard, and you can also initialize the usage time and change the maintenance product replacement cycle
- d.** Air conditioning adjustment: Adjustable air outlet direction of the air conditioner

# COMFORTABLE AND SAFE DRIVING ENVIRONMENT

## CENTRALIZED BUTTON DESIGN

### a. Rotary throttle

- The rotary throttle has high precision, strong operation and more beautiful appearance.

### b. air conditioning panel

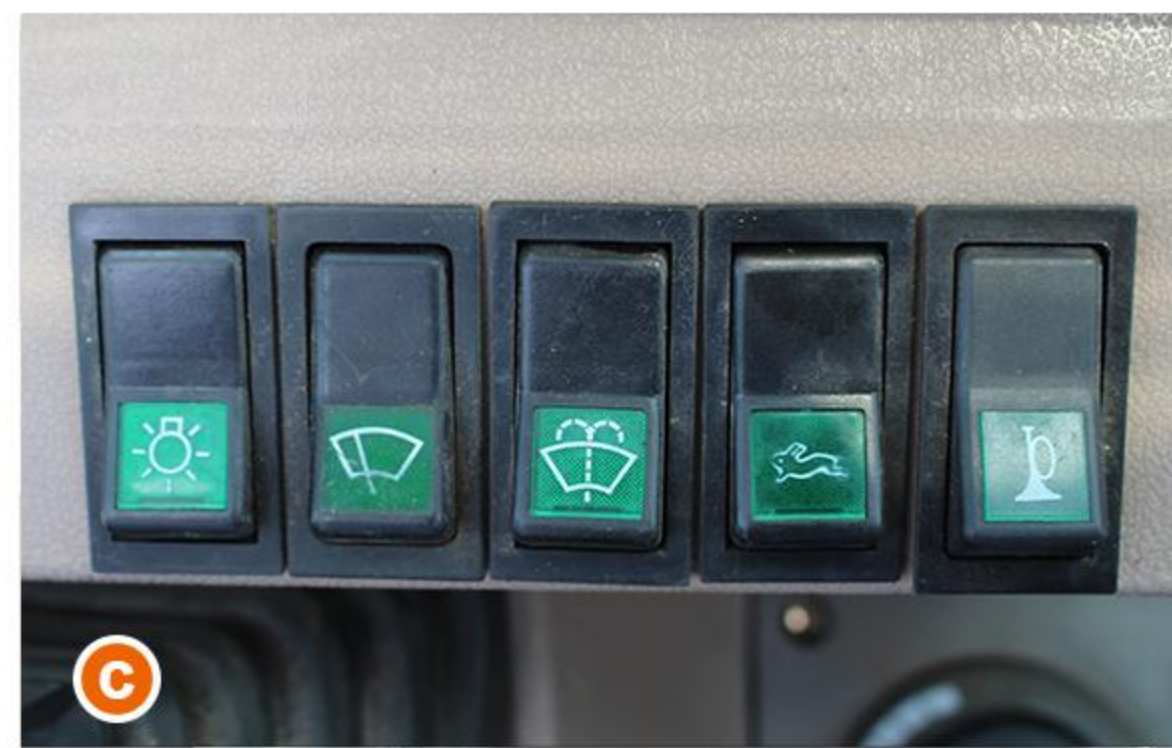
- The centralized design of the air conditioning panel can adjust the comfortable working environment according to the environment.

### c. auxiliary button

- The centralized design of auxiliary buttons greatly improves the convenience of equipment operation.

### d. car wireless radio

- You can listen to the radio and play music songs to provide a more comfortable working environment



## COMPREHENSIVE UPGRADE OF DRIVING QUALITY IMPROVED RIDE AND TACTILITY

### Comfort seat pilot operation

#### a. shock absorbing seat

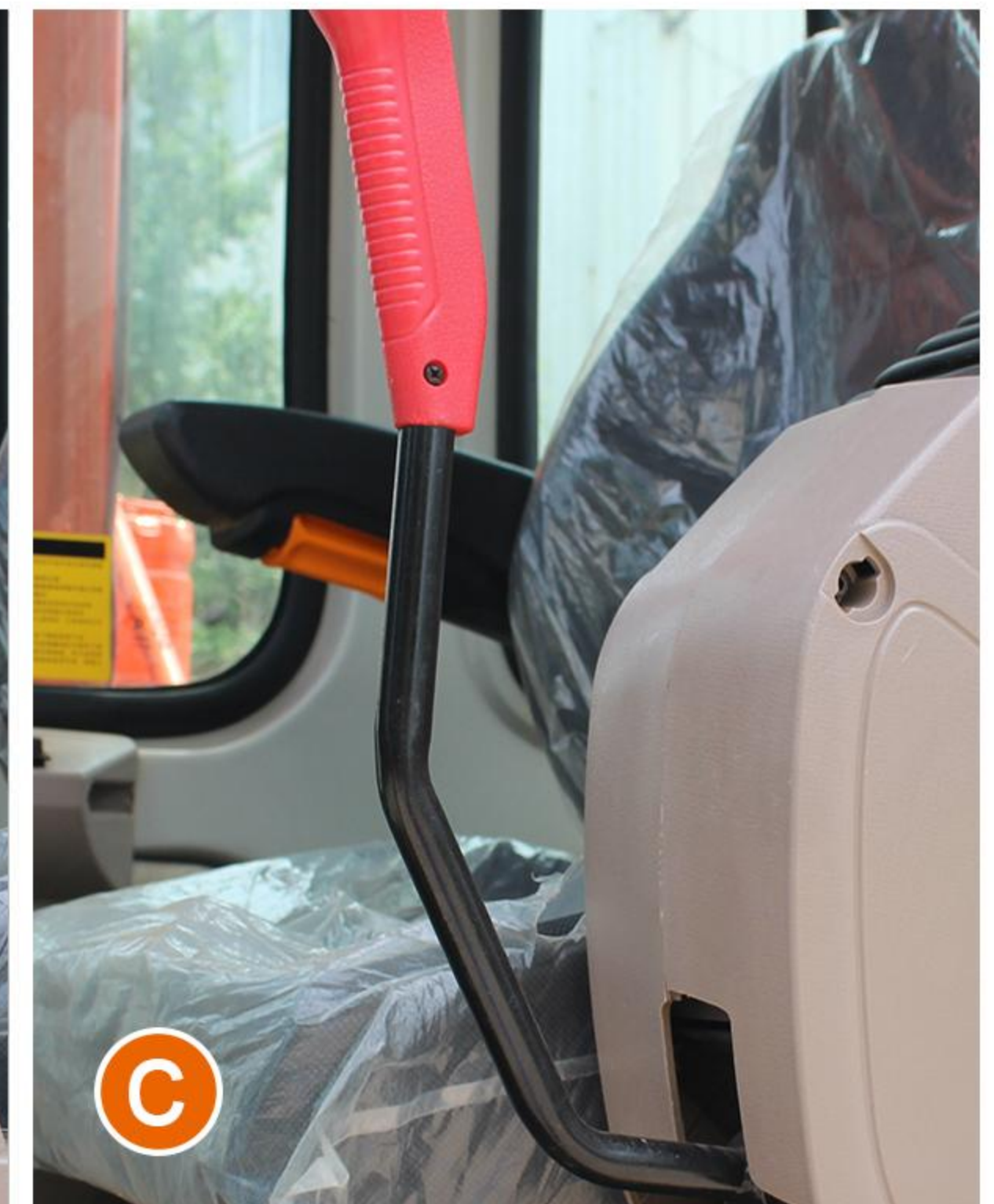
Optimization and improvement of cab shock absorption effect to reduce fatigue caused by operation

#### b. Operating handle

Rounded handle, comfortable to hold, strong operability and more precise operation control

#### c. Security lock

Equipped with safety lock for safer operation



## **CONVENIENT, FAST AND ECONOMICAL MAINTENANCE**

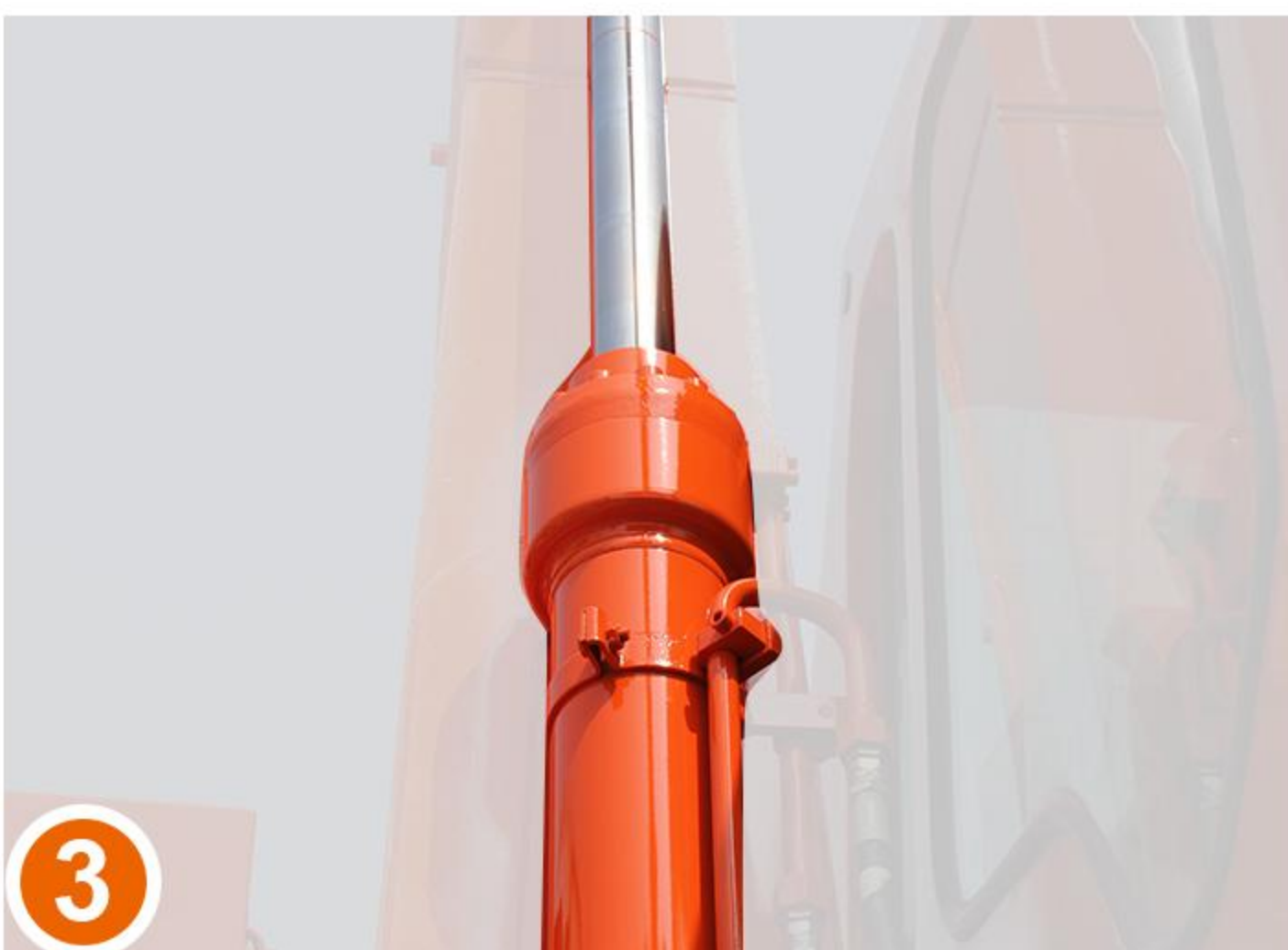
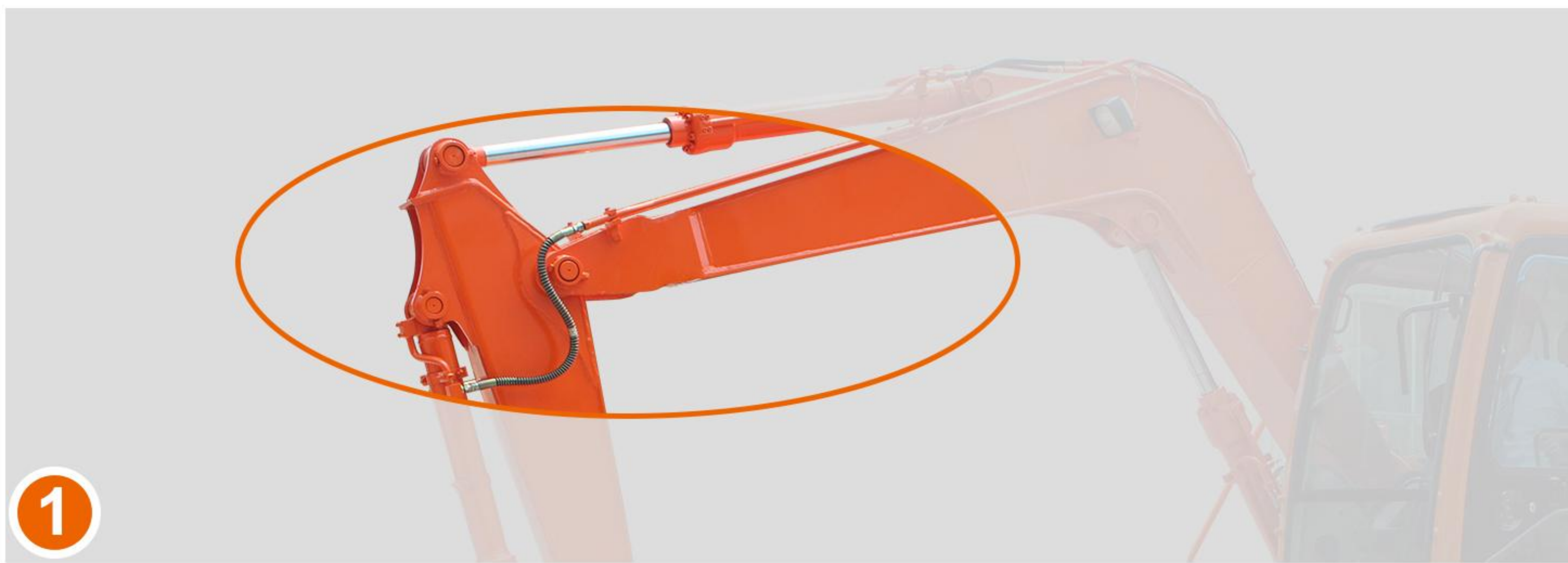
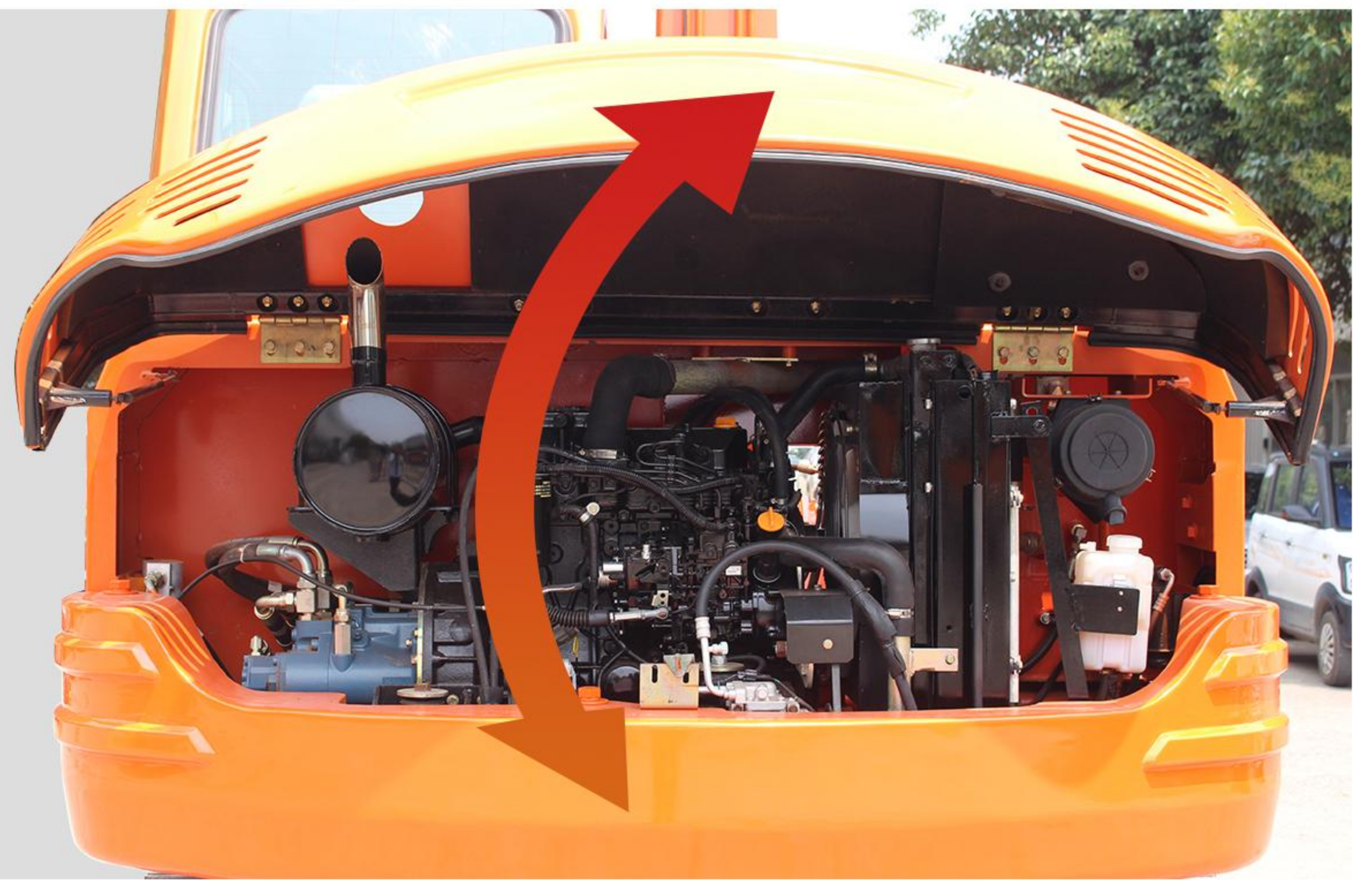
New and convenient maintenance settings provide customers with convenient and fast usage conditions.



# RELIABLE AND CONVENIENT MAINTENANCE SYSTEM

## The engine cover adopts humanized design

Continuing the design of maintenance convenience, repairs or inspections can be easily completed.



### 1. Big and small arms

The large and small arm links are strengthened, the plates are thickened, and the manufacturing process is improved. The welding type is replaced by the integrated casting type.

### 2. Cab protective cover

High-strength and thickened protective glass effectively prevents stones from being splashed during mining operations, making operation and driving safe and reliable.

### 3. Oil cylinder

The hydraulic oil cylinder with strengthened design and integrated design can reduce welding seams and prevent the oil cylinder from breaking easily.

### 4. Reliable weight bracket

The stronger counterweight bracket design can permanently protect the core components from damage, and the thickened cover plate and super-durable fixing bolts ensure its safety and stability.

### 5. Reinforced boom cylinder support

The cylinder support adopts a thickened and double-layer reinforced structure to effectively cope with the impact of crushing operations.

# MAIN SPECIFICATIONS

| Model                  | R90                     |
|------------------------|-------------------------|
| Working weight         | 8200kg                  |
| Bucket capacity        | 0.27-0.33m <sup>3</sup> |
| Boom sticks            | 3722-1672               |
| Maximum digging depth  | 4172mm                  |
| Maximum digging height | 7272mm                  |
| Unload height          | 5257mm                  |
| Dig deep vertically    | 2662mm                  |
| Long tracks            | 2752mm                  |
| Track bandwidth        | 2300mm                  |
| Track shoe wide        | 452mm                   |
| Engine type            | Yanmar 4 TNV98          |
| power                  | 45kw 2100 rpm           |
| Control valves         | Doosan / Parker/KYB     |
| Slewing motor          | Korea - Doosan          |
| Travel motor           | Korea - Doosan          |
| Main pump              | Doosan/Kawasaki         |



# SERVICE UPGRADE AND CAREFUL GUARDING

## Exclusive quality: RIPPA care



## Personal service and worry-free maintenance



### Fuel sulfur content testing

Help customers identify good and bad fuels and require the use of fuels with a sulfur content of less than 10 ppm.



### Urea concentration detection

To help customers identify good and bad urea, it is required to use a urea solution with a concentration of 32.5% ± 0.7%.



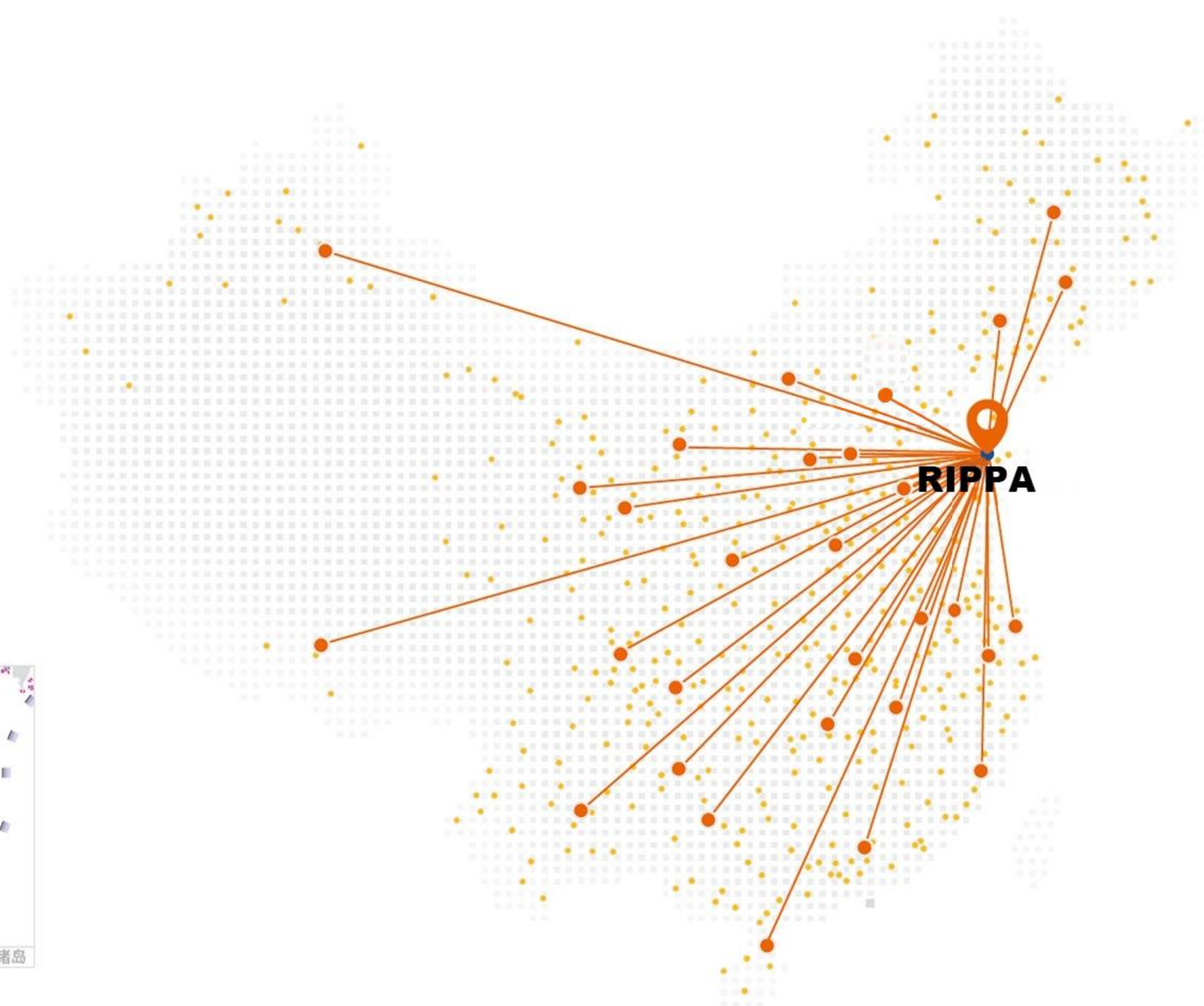
### Post-processing maintenance training

Help customers understand correct operation and maintenance methods to avoid misjudgments and failures caused by improper operation.



### DPF cleaning

During the warranty period, free cleaning service will be provided when a post-processing failure occurs for the first time.



## Nationwide sales and service network

RIPPA is always committed to providing customers with high-quality product after-sales service and support, and customized solutions can maximize customer needs.

- RIPPA Jining
- Dealer/Direct Sales
- Service outlets



Multiple ways to report for repairs  
(Telephone, WeChat,  
online customer service)



Expert seat  
Troubleshooting



Call center dispatch system



Service engineer mobile app



Intelligent service data system

# WE ARE RIPPA

Shandong Rippa Machinery Group Co., Ltd. is located in the Sixth Industrial Park, Jining high tech Zone, Shandong Province. It is a state-level high-tech enterprise with the right to import and export;

The company's staff are vigorous and enterprising, and constantly create the legend and glory of the school!

Powered by **Yanmar**



**Shandong Rippa Machinery Group Co., Ltd.**

Add: No.6 Industrial Park, Chongwen Avenue 2166, Gaoxin District, Jining City, Shandong Province

[www.lp006.com](http://www.lp006.com)

Some specifications are based on engineering measurements and may deviate from actual conditions. Specifications are for comparison purposes only and are subject to change without notice. Specifications of individual Rippa equipment will vary based on normal variations in design, manufacturing, operating conditions and other factors. Some pictures of Rippa equipment are not limited to standard packages.